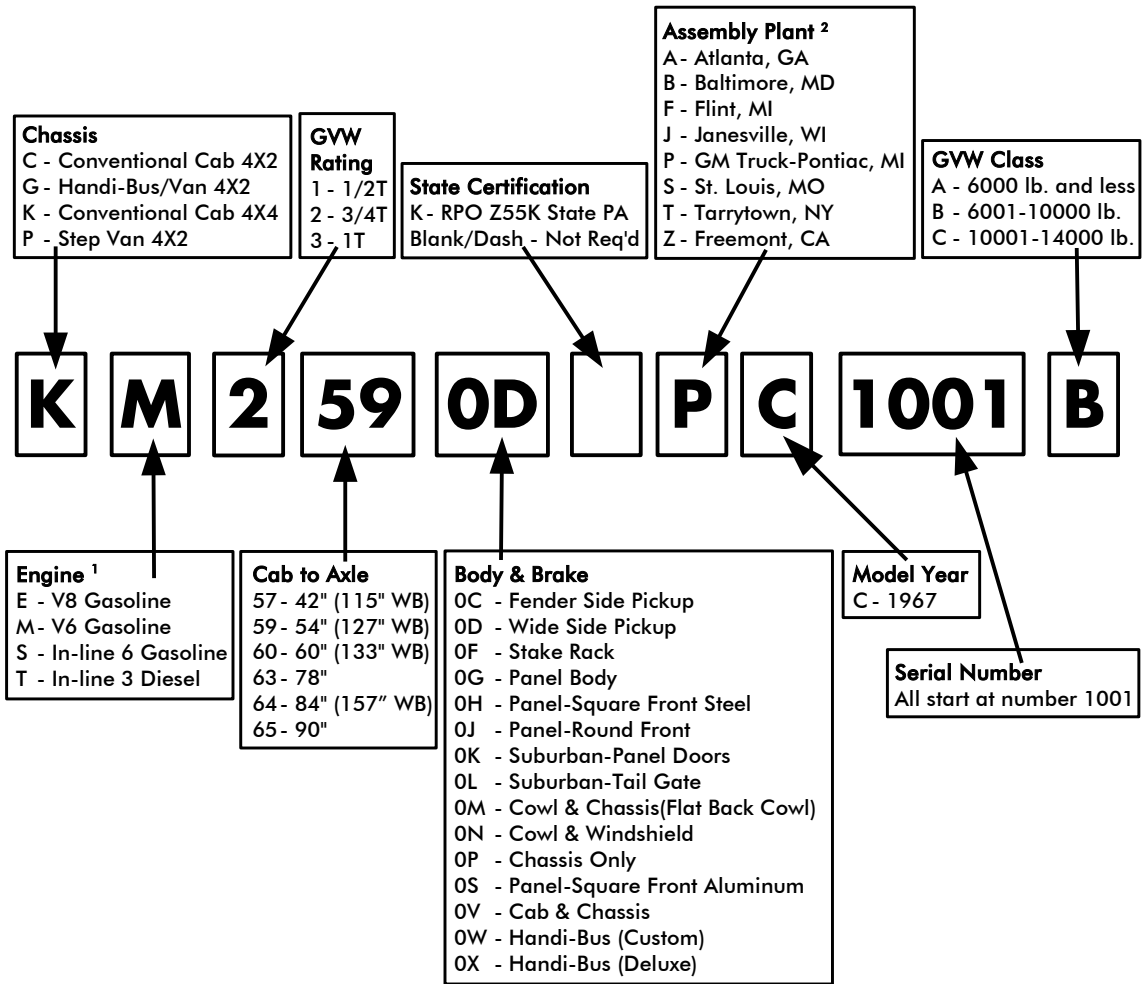


1967 GMC VIN Decode (US)

Series 1500 thru 3500



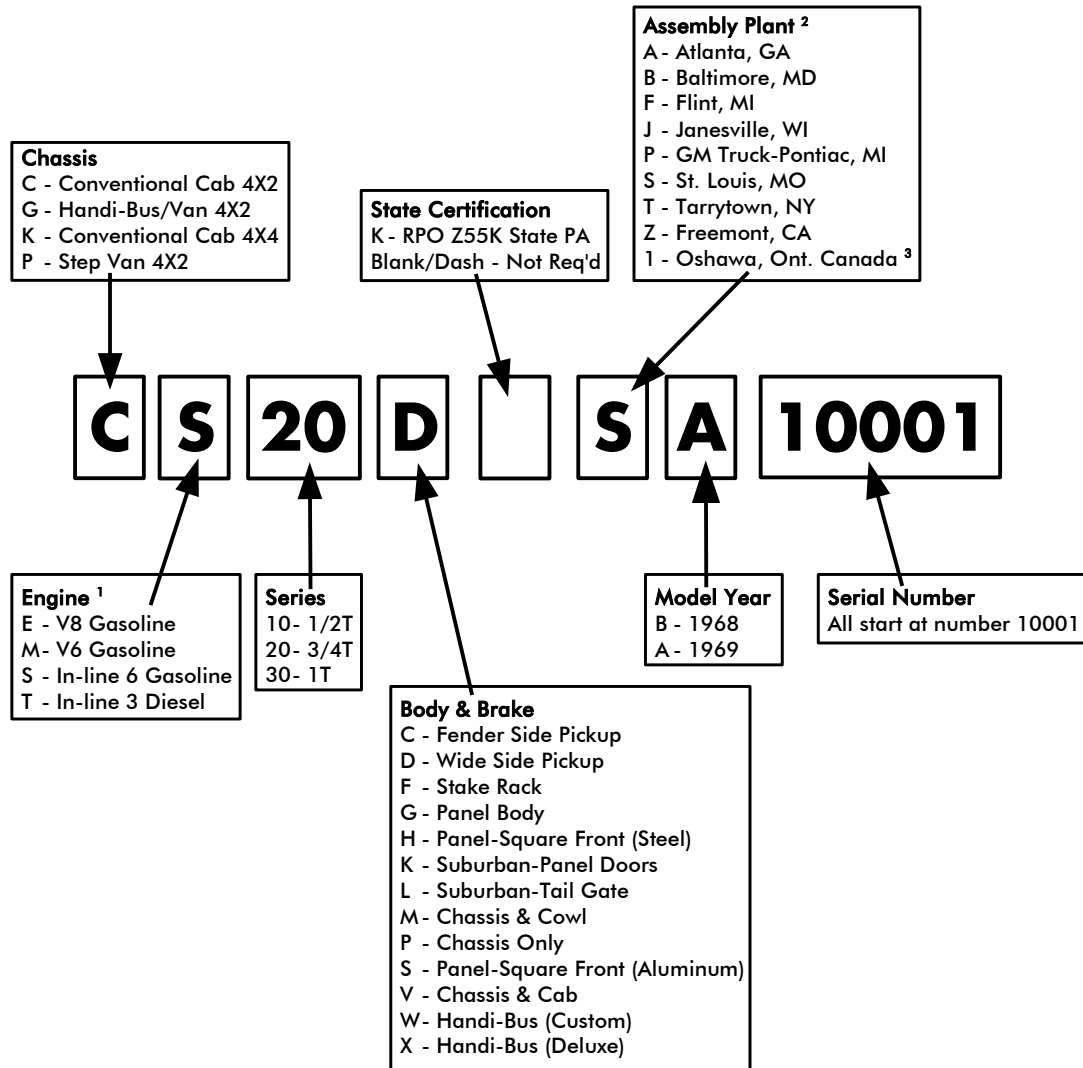
The VIN Number shown in the decode above is in the format found on the Serial Plate and on the Protect-O-Plate. On the Service Parts Identification label, the VIN Number would be shown as KM 2590D C 1001 (Plant and GVWR code absent).

[1] When optional engines are available and selected, the Service Parts Identification plate would list the engine used.
 [2] List shown is applicable to Series 10-30 truck production only.



1968-1969 GMC VIN Decode (US)

Series 1500 thru 3500



[1] When optional engines are available and selected, the Service Parts Identification plate would list the engine used.

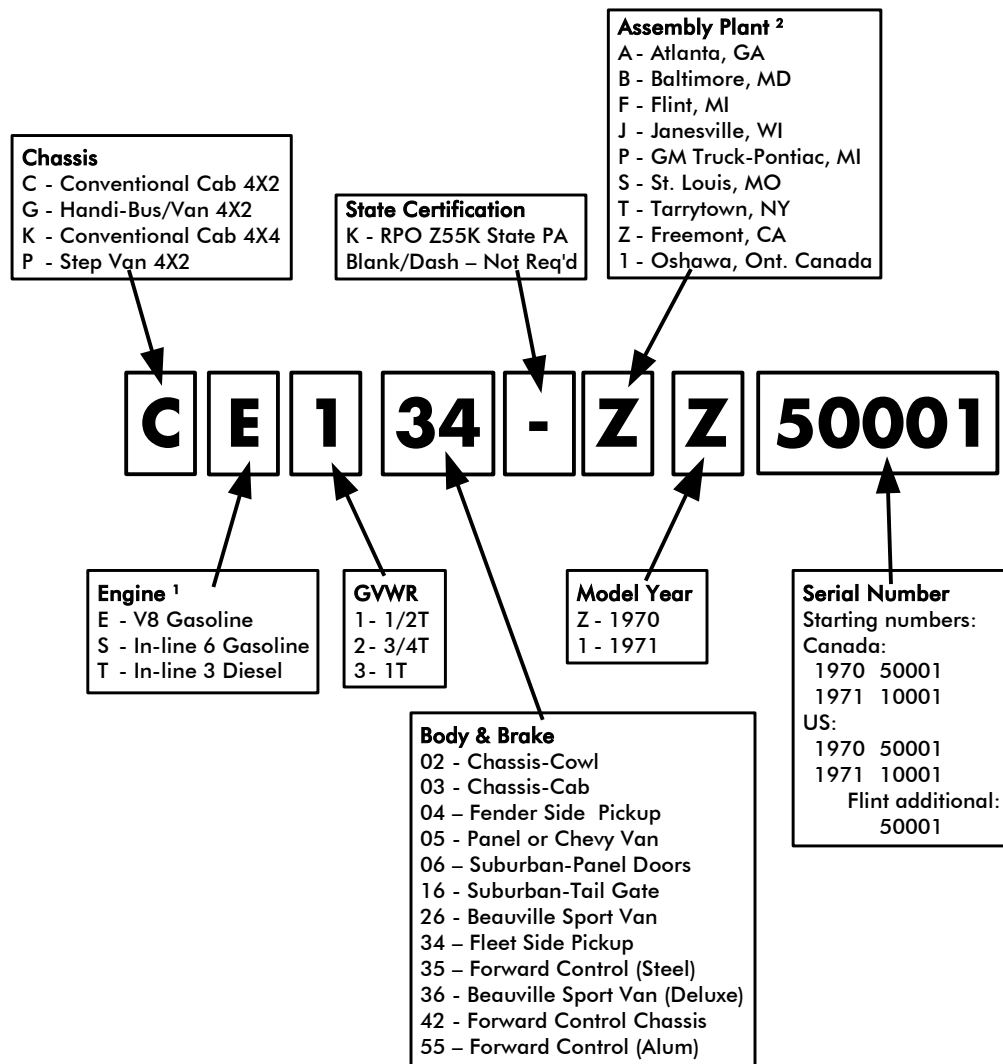
[2] List shown is applicable to Series 10-30 truck production only.

[3] This style VIN scheme has been seen occasionally on 1969 Oshawa GMC when Oshawa was primarily using its regular C9109341100001 VIN scheme.



1970-1971 GMC VIN Decode (US/Canada)

Series 1500 thru 3500

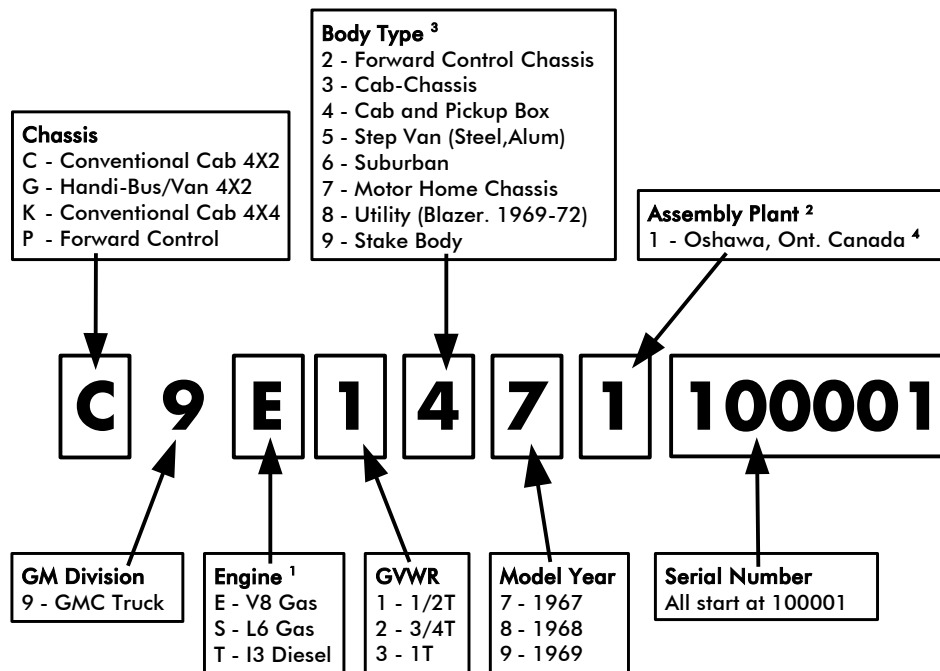


[1] When optional engines are available and selected, the Service Parts Identification plate would list the engine used.
 [2] List shown is applicable to Series 10-30 truck production only.



1967-1969 GMC VIN Decode (Canada)

Series 910 thru 930

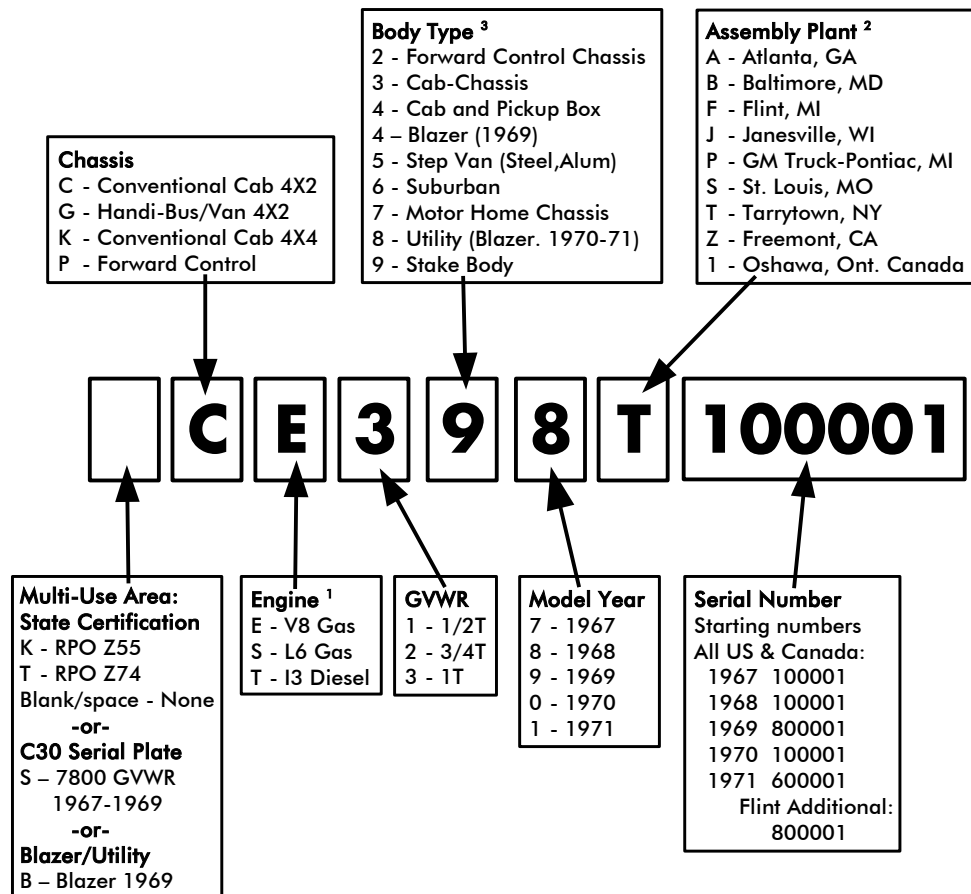


[1] When optional engines are available and selected, the Service Parts Identification plate would list the engine used.
 [2] List shown is applicable to Series 10-30 truck production only.
 [3] The Model number located on the Service Parts Identification plate is needed to identify the actual body type.
 [4] 1969 Oshawa has rare occurrences of using 1968-1969 US GMC VIN scheme style of CS10D-1A10001.



1967-1971 Chevrolet VIN Decode (US/Canada)

Chevrolet Series 10 thru 30



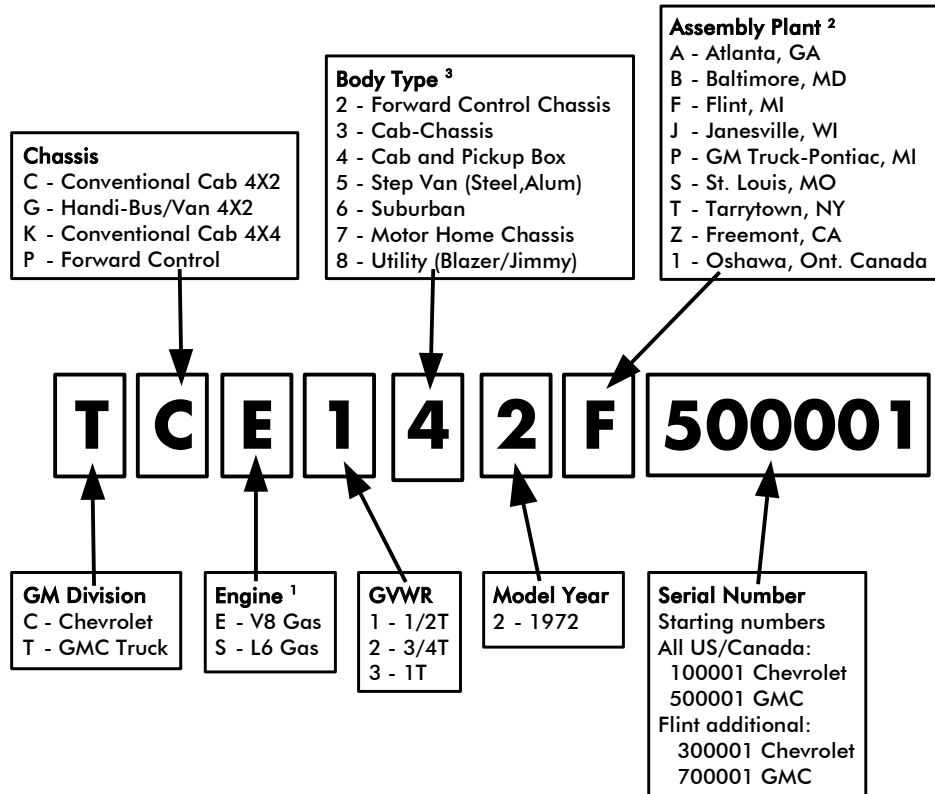
[1] When optional engines are available and selected, the Service Parts Identification plate would list the engine used.
 [2] List shown is applicable to Series 10-30 truck production only.
 [3] The Model number located on the Service Parts Identification plate is needed to identify the actual body type.



1972 Chevrolet & GMC VIN Decode (US/Canada)

Chevrolet Series 10 thru 30

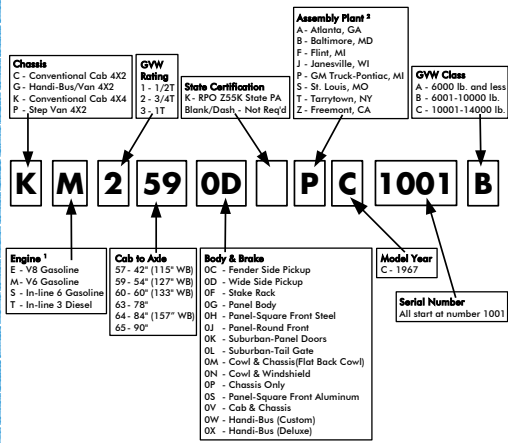
GMC Series 1500 thru 3500



[1] When optional engines are available and selected, the Service Parts Identification plate would list the engine used.
 [2] List shown is applicable to Series 10-30 truck production only.
 [3] The Model number located on the Service Parts Identification plate is needed to identify the actual body type.



1967 GMC VIN Decode (US)
Series 1500 thru 3500

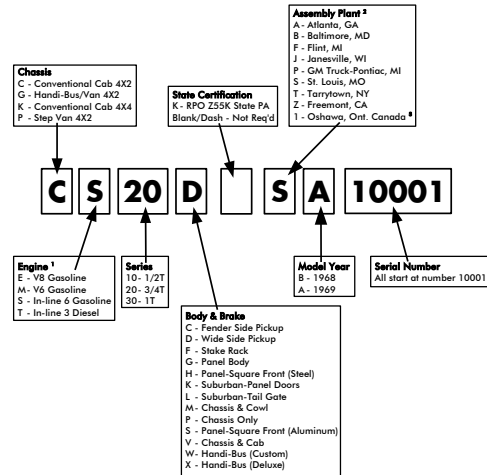


The VIN Number shown in the decode above is in the format found on the Serial Plate and on the Protect-O-Plate. On the Service Parts Identification label, the VIN Number would be shown as KM 259D C 1001 (Plant and GVWR code absent).

- When optional engines are available and selected, the Service Parts Identification plate would list the engine used.
- List shown is applicable to Series 10-30 truck production only.

Rev. D1

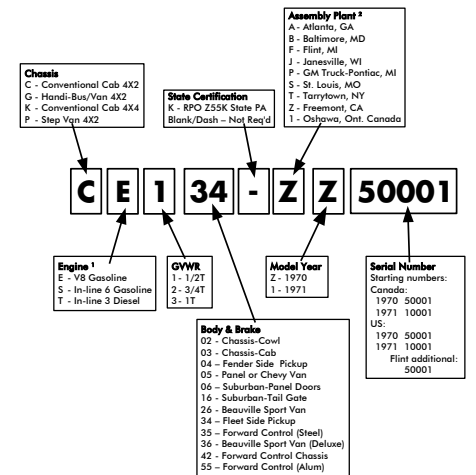
1968-1969 GMC VIN Decode (US)
Series 1500 thru 3500



- When optional engines are available and selected, the Service Parts Identification plate would list the engine used.
- List shown is applicable to Series 10-30 truck production only.
- This style VIN scheme has been seen occasionally on 1969 Oshawa GMC when Oshawa was primarily using its regular 010234100001 VIN scheme.

Rev. D1

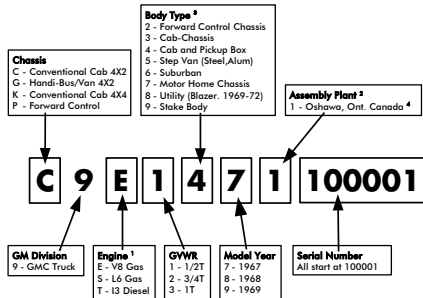
1970-1971 GMC VIN Decode (US/Canada)
Series 1500 thru 3500



- When optional engines are available and selected, the Service Parts Identification plate would list the engine used.
- List shown is applicable to Series 10-30 truck production only.

Rev. D1

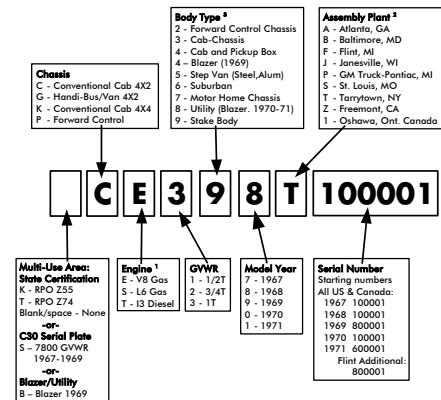
1967-1969 GMC VIN Decode (Canada)
Series 910 thru 930



- When optional engines are available and selected, the Service Parts Identification plate would list the engine used.
- List shown is applicable to Series 10-30 truck production only.
- The Model number located on the Service Parts Identification plate is needed to identify the actual body type.
- 1969 Oshawa has rare occurrences of using 1968-1969 US GMC VIN scheme style of C510D-1A10001.

Rev. D1

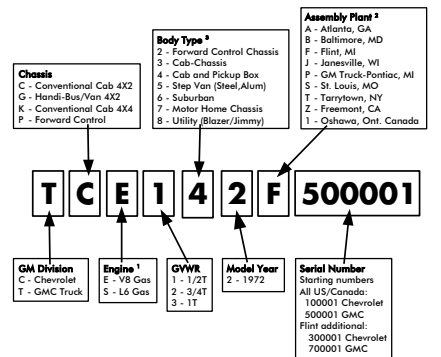
1967-1971 Chevrolet VIN Decode (US/Canada)
Chevrolet Series 10 thru 30



- When optional engines are available and selected, the Service Parts Identification plate would list the engine used.
- List shown is applicable to Series 10-30 truck production only.
- The Model number located on the Service Parts Identification plate is needed to identify the actual body type.

Rev. D1

1972 Chevrolet & GMC VIN Decode (US/Canada)
Chevrolet Series 10 thru 30
GMC Series 1500 thru 3500



- When optional engines are available and selected, the Service Parts Identification plate would list the engine used.
- List shown is applicable to Series 10-30 truck production only.
- The Model number located on the Service Parts Identification plate is needed to identify the actual body type.

Rev. D1