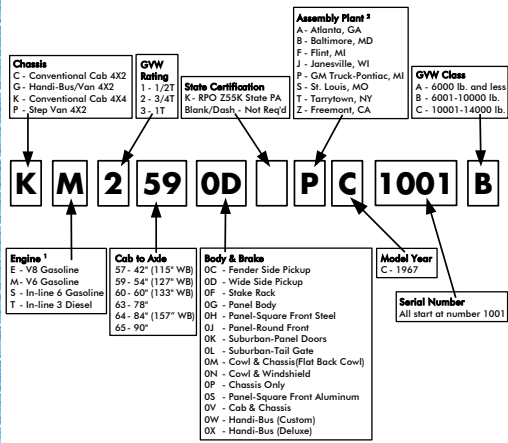


1967 GMC VIN Decode (US) Series 1500 thru 3500



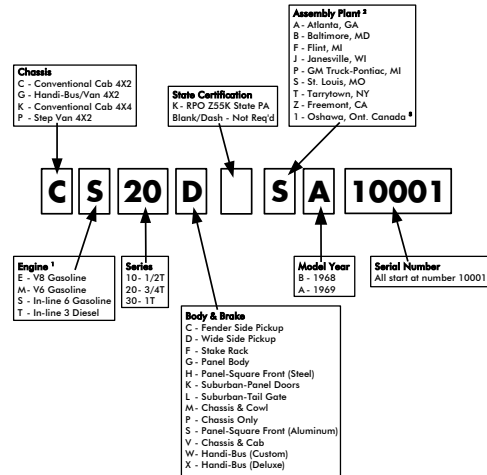
The VIN Number shown in the decode above is in the format found on the Serial Plate and on the Protect-O-Plate. On the Service Parts Identification label, the VIN Number would be shown as KM 259D C 1001 (Plant and GVWR code absent).

- When optional engines are available and selected, the Service Parts Identification plate would list the engine used.
- List shown is applicable to Series 10-30 truck production only.

Rev. D1

© 2021 gloveboxoptions.com, LLC
Free to share, non-commercial use, no derivatives, copyright and attribution must remain on works.
This work is licensed under the Creative Commons Attribution-NonCommercial-NoDerivatives 4.0 International License. To view a copy of this license, visit <https://creativecommons.org/licenses/by-nc/4.0/>.

1968-1969 GMC VIN Decode (US) Series 1500 thru 3500

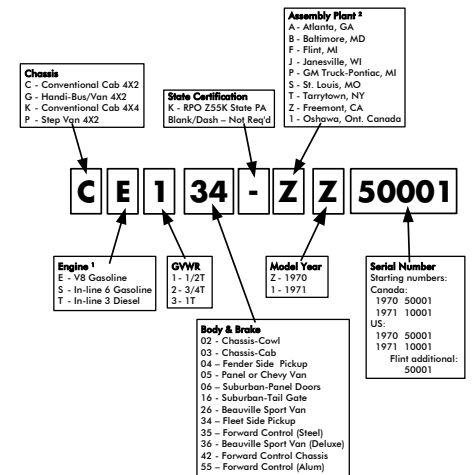


- When optional engines are available and selected, the Service Parts Identification plate would list the engine used.
- List shown is applicable to Series 10-30 truck production only.
- This style VIN scheme has been seen occasionally on 1969 Oshawa GMC when Oshawa was primarily using its regular 010234100001 VIN scheme.

Rev. D1

© 2021 gloveboxoptions.com, LLC
Free to share, non-commercial use, no derivatives, copyright and attribution must remain on works.
This work is licensed under the Creative Commons Attribution-NonCommercial-NoDerivatives 4.0 International License. To view a copy of this license, visit <https://creativecommons.org/licenses/by-nc/4.0/>.

1970-1971 GMC VIN Decode (US/Canada) Series 1500 thru 3500

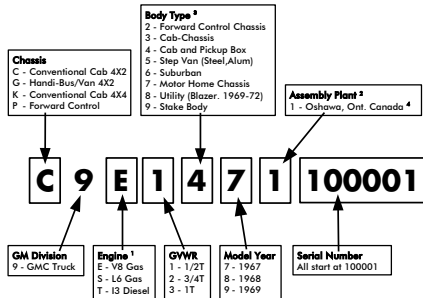


- When optional engines are available and selected, the Service Parts Identification plate would list the engine used.
- List shown is applicable to Series 10-30 truck production only.

Rev. D1

© 2021 gloveboxoptions.com, LLC
Free to share, non-commercial use, no derivatives, copyright and attribution must remain on works.
This work is licensed under the Creative Commons Attribution-NonCommercial-NoDerivatives 4.0 International License. To view a copy of this license, visit <https://creativecommons.org/licenses/by-nc/4.0/>.

1967-1969 GMC VIN Decode (Canada) Series 910 thru 930

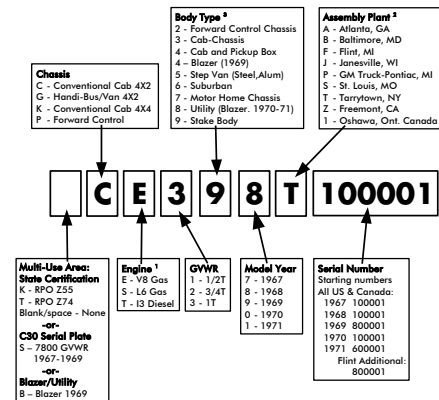


- When optional engines are available and selected, the Service Parts Identification plate would list the engine used.
- List shown is applicable to Series 10-30 truck production only.
- The Model number located on the Service Parts Identification plate is needed to identify the actual body type.
- 1969 Oshawa has rare occurrences of using 1968-1969 US GMC VIN scheme style of C510D-1A10001.

Rev. D1

© 2021 gloveboxoptions.com, LLC
Free to share, non-commercial use, no derivatives, copyright and attribution must remain on works.
This work is licensed under the Creative Commons Attribution-NonCommercial-NoDerivatives 4.0 International License. To view a copy of this license, visit <https://creativecommons.org/licenses/by-nc/4.0/>.

1967-1971 Chevrolet VIN Decode (US/Canada) Chevrolet Series 10 thru 30

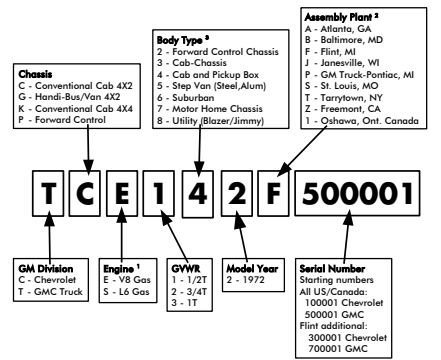


- When optional engines are available and selected, the Service Parts Identification plate would list the engine used.
- List shown is applicable to Series 10-30 truck production only.
- The Model number located on the Service Parts Identification plate is needed to identify the actual body type.

Rev. D1

© 2021 gloveboxoptions.com, LLC
Free to share, non-commercial use, no derivatives, copyright and attribution must remain on works.
This work is licensed under the Creative Commons Attribution-NonCommercial-NoDerivatives 4.0 International License. To view a copy of this license, visit <https://creativecommons.org/licenses/by-nc/4.0/>.

1972 Chevrolet & GMC VIN Decode (US/Canada) Chevrolet Series 10 thru 30 GMC Series 1500 thru 3500



- When optional engines are available and selected, the Service Parts Identification plate would list the engine used.
- List shown is applicable to Series 10-30 truck production only.
- The Model number located on the Service Parts Identification plate is needed to identify the actual body type.

Rev. D1

© 2021 gloveboxoptions.com, LLC
Free to share, non-commercial use, no derivatives, copyright and attribution must remain on works.
This work is licensed under the Creative Commons Attribution-NonCommercial-NoDerivatives 4.0 International License. To view a copy of this license, visit <https://creativecommons.org/licenses/by-nc/4.0/>.